

# Leica Cyclone IMPORTER

## Data import from third-party laser scanners



**The Leica Cyclone IMPORTER software module provides users with optimal office efficiency for working with scan data from third-party scanners within the industry's most popular point cloud software solutions: Cyclone and CloudWorx.**

The Leica Geosystems Cyclone and CloudWorx family of software products are the most efficient and advanced point cloud processing solutions and support data derived not only from Leica's industry-leading laser scanners but also third party scanners used in tandem with Leica scanning systems or as a stand alone product. For organizations who are dependent upon these third party scanners yet still want to take advantage of the speed, scale and simplicity of Leica Geosystems software. Leica Cyclone IMPORTER is an invaluable tool. Harness the power and efficiency of Leica's time-tested workflows for your third-party data and get the job done right the first time.

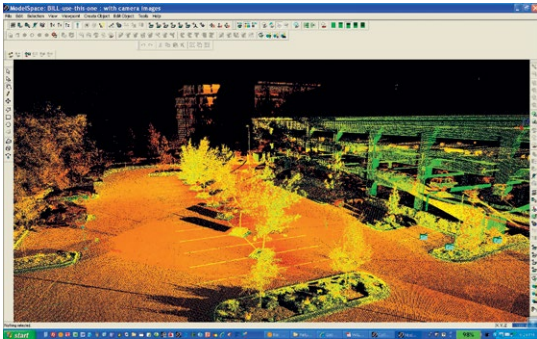
In addition to a user's ability to work with any scan data in neutral formats such as ASCII, PTS, PTX, and PTG, Cyclone 9.2 software allows Cyclone and CloudWorx users to work with point cloud data from third-party scanners in the native data format directly output by these scanners. This capability avoids time-consuming data conversion steps to neutral data formats and it minimizes the size of imported files for what are often large data sets.

Leica Cyclone and Cloudworx are the most popular and powerful point cloud tools available. In recognition of their universal utility and irreplaceable function within countless organizations' workflows, Leica Geosystems has facilitated direct agreements with third-party manufacturers to provide native data import.

#### **Supported Third-Party 3D Scanner Manufacturers**

- Faro
- Riegl
- Optech
- Z+F
- DotProduct

# Leica Cyclone IMPORTER



Direct importing of data in native format from third-party scanners provides greater office efficiency and versatility for Cyclone and CloudWorx users who need to work with such data.

## Native format compatibility with third-party laser scanners

With Leica Cyclone IMPORTER and CloudWorx users can import third-party scanners native formats. This allows the full and efficient use of all the valuable Cyclone modules and features such as registration, 3D modeling, data analysis, Cyclone PUBLISHER and TruView, and all that the Cyclone modules offer.

In addition to individual scans, Cyclone IMPORTER also supports the importation of registration transformations from other vendors. This provides the flexibility to leverage registration work if it has already been done in another scanner manufacturer's software by a contractor or colleague. Cyclone IMPORTER also enables users to conduct most of the work in a third-party system and use IMPORTER to bring the data into Cyclone format for delivery to a customer, downstream deliverable contractor or to comply with contractual delivery specifications.

In addition to its direct importing features, Leica Cyclone IMPORTER also supports a vast array of the standard visualization features of Cyclone so it can be used as a standalone solution. IMPORTER also supports a long list of other important project data formats, such as BMP, JPG, LandXML and others.

## Leica Cyclone IMPORTER Specifications\*

<b>Visualization</b>	Full 3D fly, pan, zoom, rotate; including 3D mouse support. Control color mapping using intensity, true-color, gray scale, color by elevation
<b>Import</b>	Data from CAD via COE (Cyclone Object Exchange) Control data from ASCII formats & X-Function DBX FARO: FLS, FWS, and FRP DotProduct: DP Optech: IXF RIEGL: 3DD and RSP ZFS, ZFC, SCAN, SC2, ScanStation C10 Project, ScanStation P15/P16/P20/P30/P40/P50 Project, Pegasus Project, MS50 and MS60 HeXML BMP, TIFF, JPEG, PNG LandXML, SIMA LAS & E57 ASCII: PTS, PTX, TXT, XYZ PTZ, PTG, PTB

## Hardware and System Requirements

### Minimum Specifications

<b>Processor:</b> 2.0 GHz Dual Core processor or better
<b>RAM:</b> 2 GB (4 GB for Windows Vista or Windows 7)
<b>Hard disk:</b> 40 GB
<b>Display:</b> SVGA or OpenGL accelerated graphics card (with latest drivers)
<b>Supported operating systems:</b> Windows 7 (32 or 64 bit), Windows 8 & 8.1 (64 bit only), Windows 10 (64 bit only)
<b>File system:</b> NTFS

### Recommended Specifications

<b>Processor:</b> 3.0 GHz Quad Core w/ Hyper-threading or higher
<b>RAM:</b> 32 GB's or more 64 bit OS
<b>Hard disk:</b> 500 GB SSD Drive
<b>Large project disk option:</b> RAID 5, 6, or 10 w/ SATA or SAS drives
<b>Display:</b> Nvidia GeForce 680 or ATI 7850 or better, with 2 GB's memory or more
<b>Operating system:</b> Microsoft Windows 7 – 64bit
<b>File system:</b> NTFS

Windows is a registered trademark of Microsoft Corporation.  
Other trademarks and trade names are those of their respective owners.

\* Reference the Leica Cyclone & CloudWorx Technical Specifications document for a complete listing of product specifications.

Illustrations, descriptions and technical data are not binding. All rights reserved.  
Printed in Switzerland – Copyright Leica Geosystems AG, Heerbrugg, Switzerland, 2016.  
760313enus – 11.17

Leica Geosystems AG  
leica-geosystems.com



- when it has to be **right**

**Leica**  
Geosystems